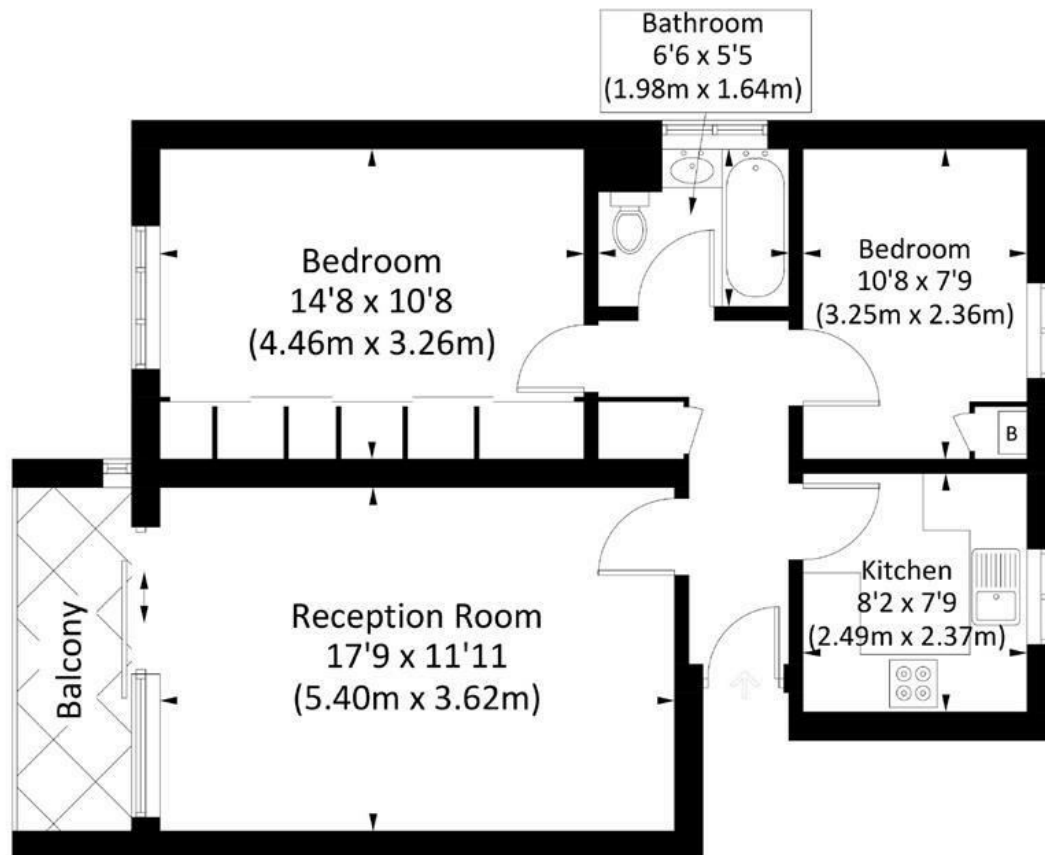


CARLTON PLACE, SW15

Approx. gross internal area 647 Sq Ft. / 60.1 Sq M



Ground Floor

Illustration for identification purposes only, measurements are approximate, not to scale. FloorplansUsketch.com © 2019 (ID520639)

DISCLAIMER•These particulars are intended to give a fair and substantially correct overall description for the guidance of intending purchasers and do not constitute an offer or part of a contract. Prospective purchasers and/or lessees ought to seek their own professional advice.

•All descriptions, dimensions, areas, references to condition and necessary permissions for use and occupation and other details are given in good faith and are believed to be correct, but any intending purchasers should not rely on them as statements or representations of fact, but must satisfy themselves by inspection or otherwise as to the correctness of each of them.
•All measurements are approximate.



Carlton Place, Putney, SW15

A superbly located two double bedroom flat on the ground floor of this small purpose built block in the heart of Putney. Offered on a furnished basis and benefiting from a private balcony, wood floors throughout and communal gardens, the accommodation comprises an entrance hallway, bright reception room with access to the balcony, fitted kitchen, two double bedrooms and bathroom with shower over the bath. Carlton Drive is a popular road due to it's proximity to not only all the amenities on the high street but also East Putney underground and Putney mainline station. There are also a number of highly regarded nurseries and schools close by. Available early July 2026.



- GROUND FLOOR FLAT
- FITTED KITCHEN
- BATHROOM WITH SHOWER
- WOOD FLOORS
- EPC C
- RECEPTION ROOM
- TWO DOUBLE BEDROOMS
- PRIVATE BALCONY
- CLOSE TO AMENITIES & TRANSPORT

Per Calendar Month
£2,000 Per Calendar Month

